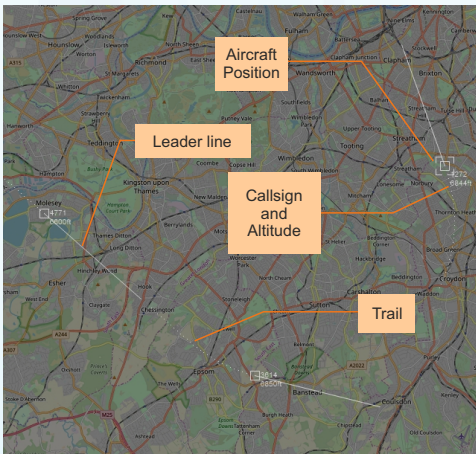


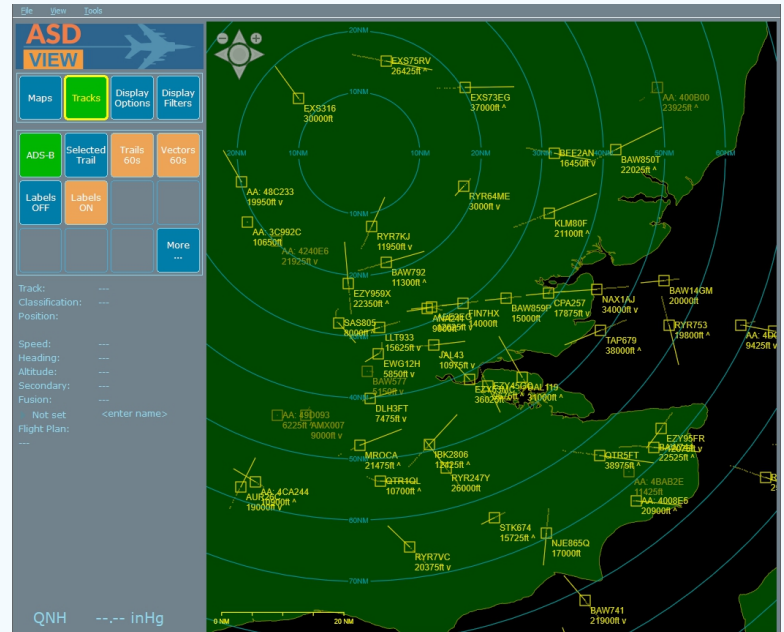
## ASD VIEW



### Features:

- Complete ready-to-run application for Windows
- Windows 7 / 8 / 8.1 / 10 compatible
- ASTERIX CAT-21 ADS-B data input
- NMEA 0183 navigation data to support moving platforms
- Multiple map support (On/Off line):
  - Tiled maps
  - Terrain contour map
  - World map
- History trails and target vectors ("leader lines")
- Configurable target label display
- Flexible configuration options
- Full zoom and off-centre control
- Display filters
- Overlay graphics:
  - Range rings
  - Rulers
  - Range scale indicator
- Multiple track monitor windows
- Easy configuration wizard

Track:	1272
Classification:	---
Position:	51° 26' 49.91" N 00° 08' 27.32" W
Speed:	194 Kts
Heading:	309°
Altitude:	6625 ft
Secondary:	0000



**ASD-View is Cambridge Pixel's PC-based display application for ADS-B receivers. It is a complete ready-to-run Windows application for the display of target positions and associated information.**

ASD-View is part of Cambridge Pixel's air surveillance display solutions which include the ASD-100 application for the display of primary and secondary radar data and associated information such as plots, tracks and safety alerts.

In 2020, ADS-B Out capability will be mandatory on aircraft equipment in many regions of the world. Additionally, ADS-B is increasingly used by helicopters, light aircraft, gliders, drones, airport vehicles and maritime vessels such as FSOs and offshore maritime platforms with helicopter landing areas.

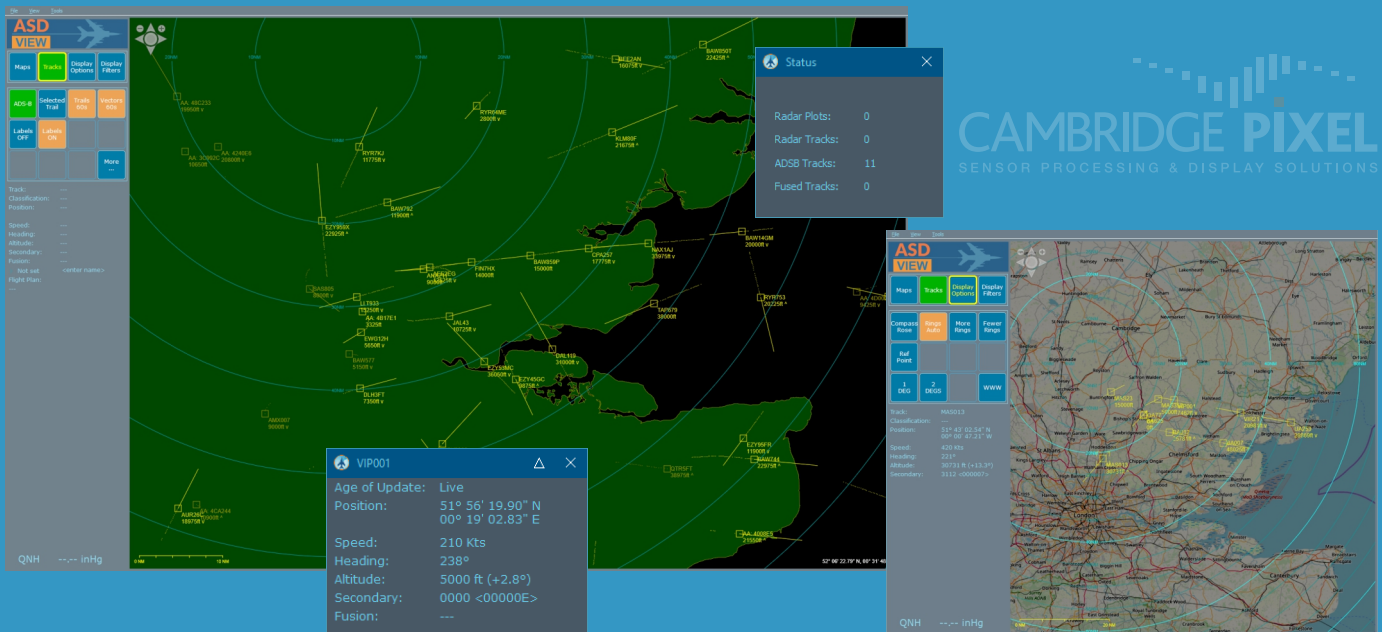
ASD-View runs on any modern Windows (7 / 8 / 8.1 / 10) PC, accepting input data from the network in open ASTERIX formats. ASD-View can interface to a number of different data inputs, including:

- ASTERIX CAT-21 (Automatic dependent surveillance)
- NMEA 0183 navigation data such as gyro heading and GPS positioning

The graphical user interface has been designed with modern touchscreen displays in mind. To this end, the frequently-used controls are readily accessible and operated by large buttons. Common view controls, such as pinch-to-zoom and slide-to-pan are supported.

### Going Further with ASD-100

Where ASD-View provides a visualisation capability for ADS-B tracks, Cambridge Pixel's ASD-100 product expands the capabilities to include primary and IFF radar and derived track data. The ASD-100 display can show any combination of ADS-B data, primary radar video, IFF radar video, primary tracks and IFF tracks fused together and presented on a geo-located map with a comprehensive set of tools for air defence applications. ■



## Operating Systems

Windows 7 / 8 / 8.1 / 10

## Number of Input Channels

- 1 channel of ADS-B data
- 1 channel of NMEA 0183 Navigation Data

## Supported Inputs

**ADS-B:** ASTERIX CAT-21 or 112-bit extended squitter (with SPx header)

## PPI Display

- Underlay maps:**
- Tiled maps (Open Street Map)
  - Terrain Contour map
  - World Vector Shoreline map

- Overlay graphics:**
- Track displays
  - Range rings
  - Compass rose
  - Target symbols
  - Vectors (leader lines)
  - Trail history
  - Track labels
  - Multiple rulers (x8)
  - Cursor position
  - Reference Point
  - Pop-up Track Monitor windows

- Control:**
- Display filtering by height and speed / Area filtering
  - Track suppression ("GROUND" and "TEST" Track types)
  - Snapshot of display

## ATC Information

QNH value display to assist ATC operators

## Control and Configuration

### Local GUI:

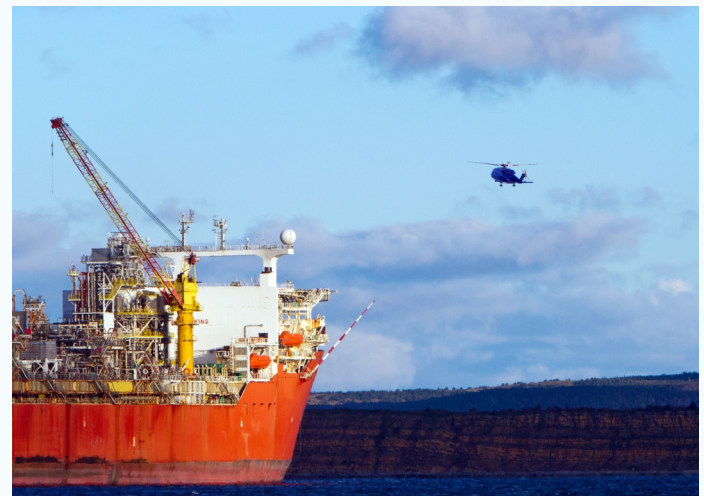
- User interface for local control and configuration
- Setup Wizard

### Configuration File:

- Human-readable/editable text file

## Operator Features

- Full zoom and off-centre
- Target display filters
- Configurable measurement units



For more information, please contact: